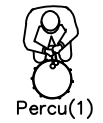
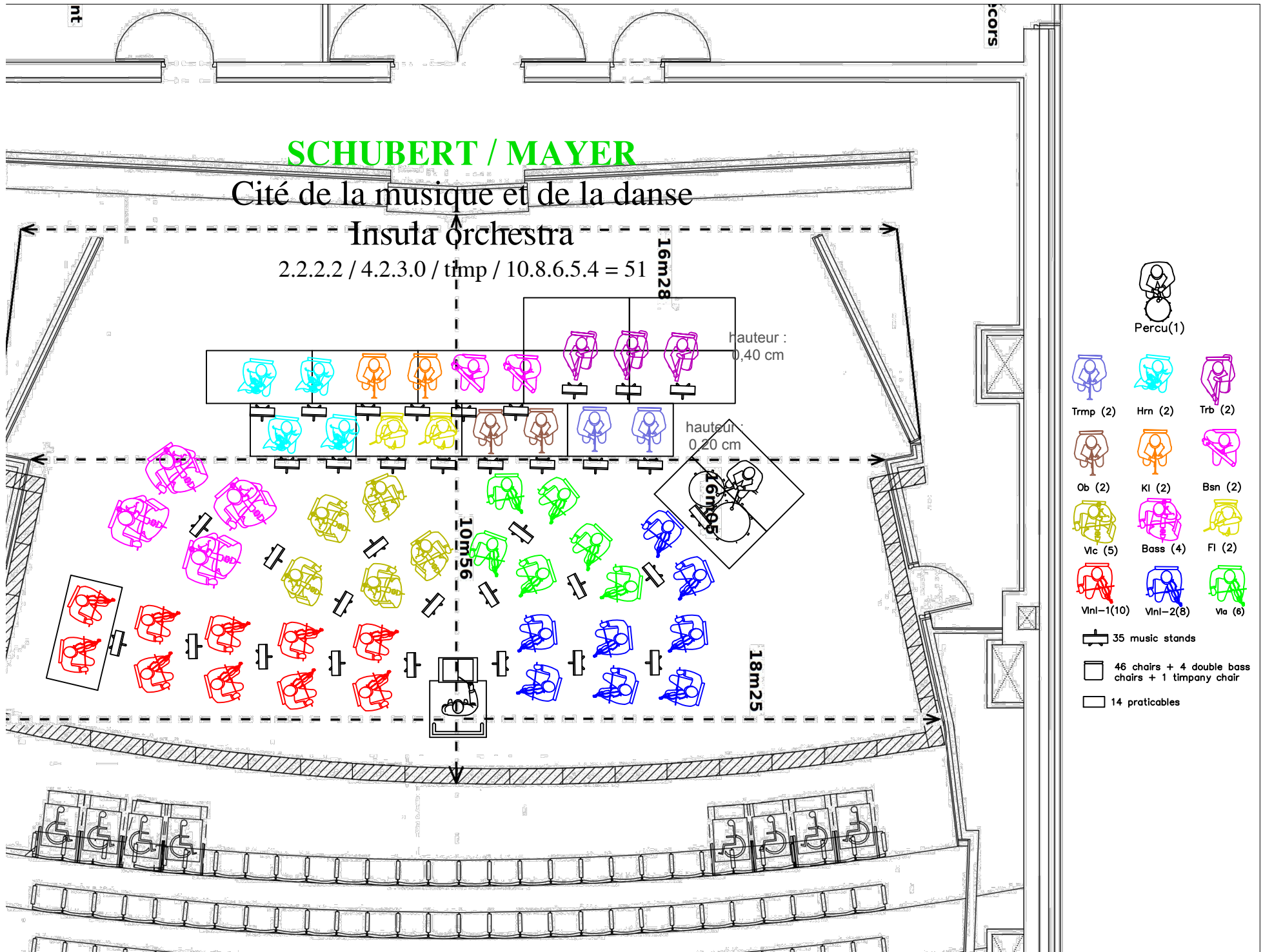


SCHUBERT / MAYER

Cité de la musique et de la danse

Insula orchestra

2.2.2.2 / 4.2.3.0 / tmp / 10.8.6.5.4 = 51



Percu(1)



Trmp (2)



Hrn (2)



Trb (2)



Ob (2)



Kl (2)



Bsn (2)



Vic (5)



Bass (4)



Fl (2)



VinI-1(10)



VinI-2(8)



Via (6)

35 music stands

46 chairs + 4 double bass chairs + 1 timpany chair

14 praticables